

 CASE STUDY



BUSINESS LOUNGE &
MEETING SUITE

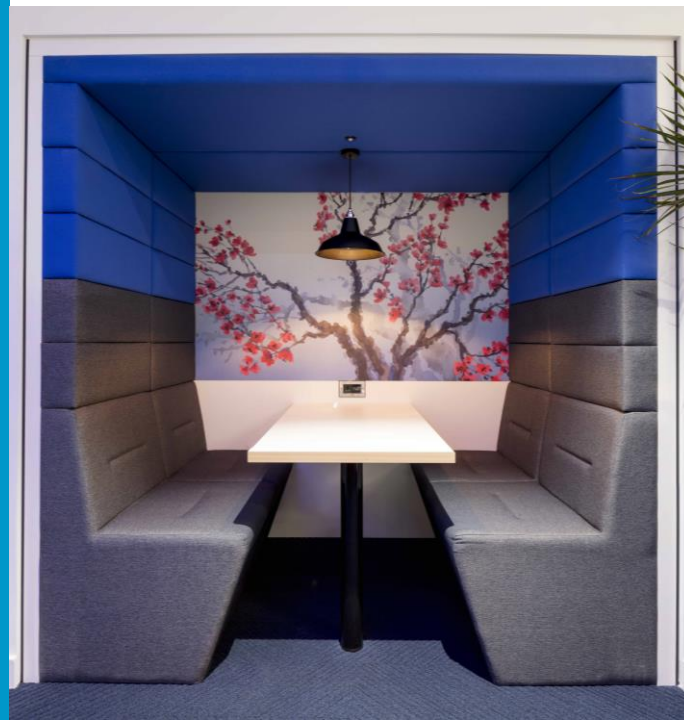
REFURBISHMENT IN
OCCUPATION

85" MICROSOFT SMART
BOARD MEDIA WALLS

ELECTRICALLY
RETRACTING WALL

TECHNOLOGY FOCUSED

FEATURE LIGHTING &
DIGITAL SKYLIGHT





WHAT'S THE STORY...

Otsuka is an international pharmaceutical company which has an ethical and people orientated philosophy.

Having completed their 23,000sqft HQ design and fit out project in 2014, Blue Jelly were delighted to be selected to update and improve their HQ meeting suite to provide an all day focused meeting hub, supported by the latest seamlessly integrated technology.

Key drivers for Otsuka were to minimise disruption throughout this refurbishment in occupation, to create a 'wow factor' through clever design and to encourage all day use.

In order to improve the working environment, we installed ceiling blades and baffles as well as a highly specified double glazed partitioning system. With a focus on wellbeing, we considered the most effective utilisation of space, comfort and technology.

New technology which supports agile working and meetings, included a virtual book, 85" Microsoft smart screens, an electrical folding wall as well as a virtual skylight with multiple inputs from around the world.

To represent the client's culture and heritage, we created Japanese style 'shoji' screen detailing and added a contemporary twist on traditional Japanese artwork motifs.

The final outcome made the meeting suite work harder for the business and become an all day drawer for staff and visitors.

